



SAFE START  
A U S T R A L I A

# HOME FIRE ESCAPE PLAN



SPECIALISING IN CHILDHOOD INJURY PREVENTION

# HOME FIRE ESCAPE PLAN

A well-practiced and up to date fire escape plan could save you and your family's life. This could be one of the most important exercises you do and everyone in your home should know how to escape quickly in the event of a fire.

**Remember** practice makes perfect! Please practice this plan with everyone in your home especially children.

## STEPS

1

Create a fire escape plan specific to your home



2

Discuss the plan with everyone in your home



3

Practice the plan twice a year (perform a test and clean of your smoke alarm as well)



4

Understand how to prevent a fire (see the details on the next page)



# IMPORTANT PREPERATION

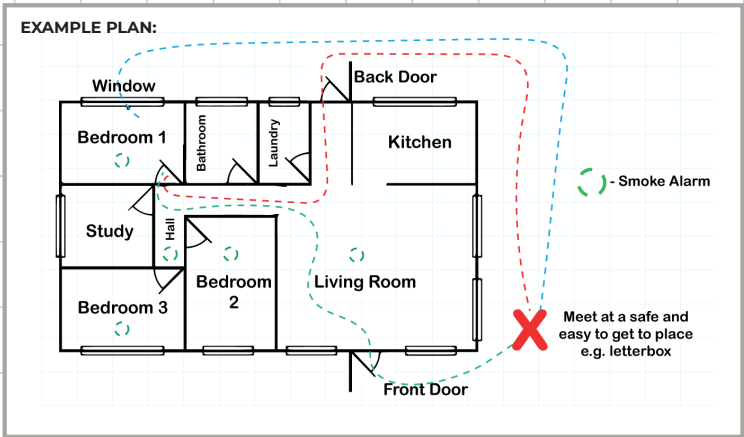
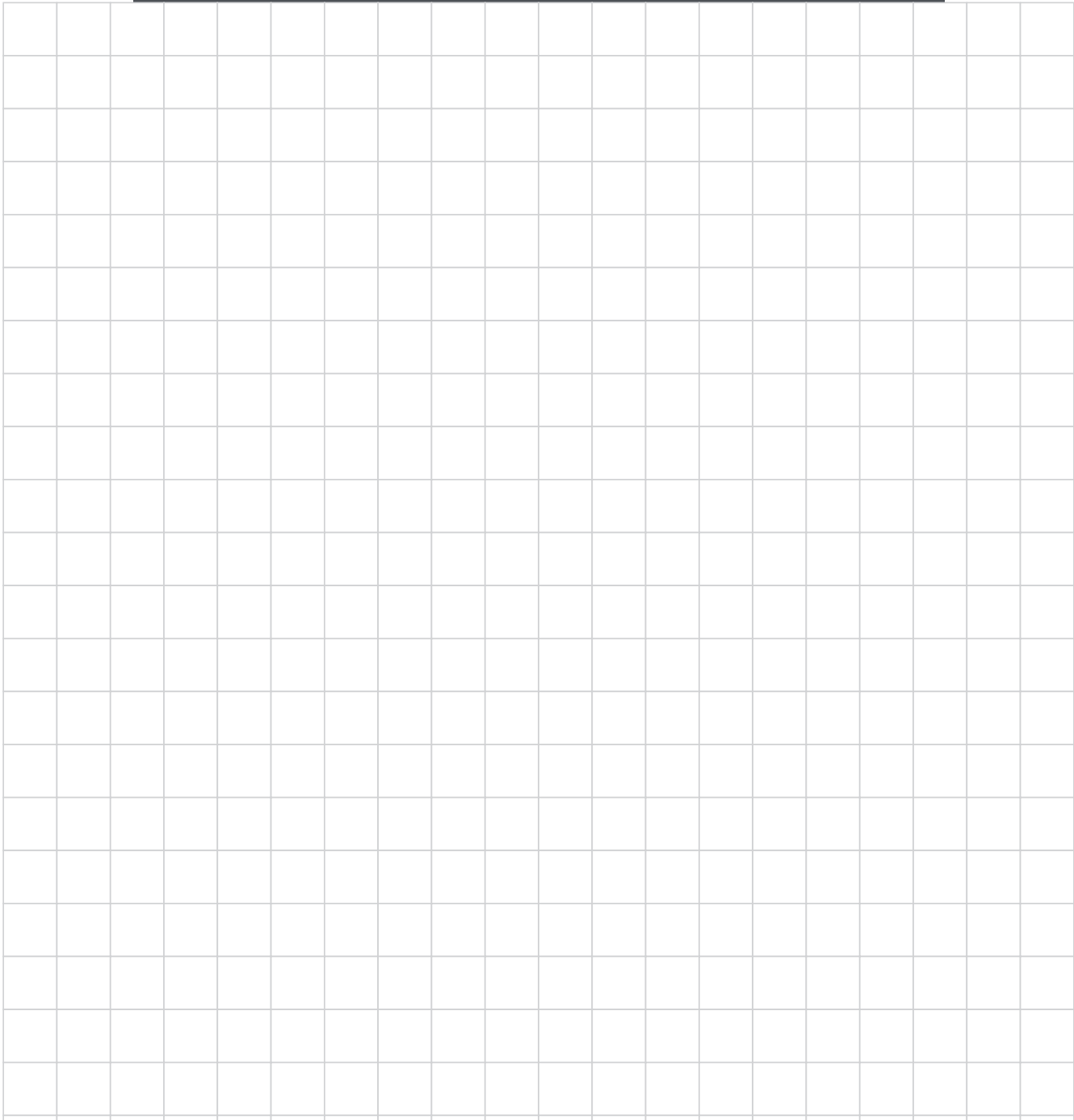
Time is crucial and acting as fast as you can in the event of a fire can save lives.

1. Keep all escape routes clear in your home
2. Always keep keys in a safe place near your windows and doors for deadlocks and window locks
3. Security bars and grills on windows should have a quick release feature on the inside
4. Document and discuss two exit routes from each room
5. Include a designated safe meeting area outside of your property
6. Purchase a fire blanket and a suitable fire extinguisher
7. Don't store combustible materials in your home/garage
8. Perform a test and clean of your smoke alarm at least twice a year
9. Teach your children that fire can be dangerous and always store matches and lighters out of sight and reach

# IN THE EVENT OF A HOUSE FIRE

1. As soon as you hear a smoke alarm you must act
2. If it is safe to extinguish the fire, then do so
3. Quickly evacuate infants and young children as per your home fire escape plan
4. Safely exit through doors or windows
5. Stay low and crawl to the nearest safe exit
6. Cover your nose and mouth with a cloth if you must walk through smoke
7. If your clothes are on fire stop, drop and roll on the ground
8. Do not re-enter the property
9. Meet in a safe place outside
10. Call 000

# CREATE YOUR OWN FIRE ESCAPE PLAN



**CREATE YOUR OWN FIRE ESCAPE PLAN**

A large grid for drawing a fire escape plan. The grid consists of 20 columns and 25 rows of squares, providing a space for users to sketch their own fire escape routes and room layouts.



SAFE START  
AUSTRALIA



For more information visit [www.safestartaustralia.com.au](http://www.safestartaustralia.com.au)

Copyright © 2018 Safe Start Australia. All Rights Reserved.